



YOUR **TRUST**, OUR **IDENTITY**

---



STARTED IN  
1992

# ABOUT US

Rashmi Engicon,  
are engaged in the real estate industry since 1992. Over time, we have created our own space and built a unique identity in the real estate world of Ahmedabad.

A dream of Mr. Dipak Hirpara, a civil engineer and fabrication contractor by passion and a builder by heart, in the early 90s which led to the formation of Rashmi Engicon Pvt Ltd in 1992. Since then we have leveraged our decades of experience in the real estate segment to provide intelligently crafted residential & commercial spaces which are surprisingly affordable & elegantly designed.





# 10 MILLION+

SQ. FT. Developed

# 13,000+

**Residential & Commercial & Industrial**  
Units delivered

Commercial Units  
**4,500+**

Residential Units  
**6,000+**

Industrial Units  
**2,500+**

At the heart of our pride is the joy and satisfaction we bring to families. A steadfast commitment to quality defines every home, ensuring it becomes a haven of enduring happiness and contentment.





## VISION

Our vision is to be known for our excellence & integrity in the real estate segment & be the mainstay of affordable spaces that people take pride to call their own & can pass down as a legacy to their loved ones.

## MISSION

Our mission is to make owning property a reality for everyone & offer excellence in real estate services to an extent that we make customers for life. Our efforts shall forever remain in providing the best spaces at the best rates as per market & exceeding the expectations of our patrons through transparency, quality offerings & attention to detail.





## OUR LEGENDS

---

A dream of **Mr.DIPAK HIRPARA**, a civil engineer and fabrication contractor by passion and a builder by heart, in the early 90s which led to the formation of **Rashmi Engicon Pvt. Ltd.** in 1992.

Since then we have leveraged our decades of experience in the real estate segment to provide intelligently crafted residential & commercial spaces which are surprisingly affordable & elegantly designed.





## Mr. Dipak Hirpara

The **chairman - founder** of **rashmi group** **mr. dipak hirpara**, founder of rashmi group, boasts vast expertise in real estate, particularly in land transactions. his leadership drives strategic decisions, ensuring rashmi group's success. with insightful approaches and market understanding, he's a distinguished figure in the industry, fostering growth and excellence.

## Mr.jignesh Hirpara

**Co-founder & MD** of rashmi group, excels in real estate project execution and sales. his focus on exclusivity and quality ensures successful projects and timely delivery. with visionary leadership, rashmi group thrives under his guidance, reflecting commitment to excellence.







## Harshal Hirpara

**CFO** at Rashmi Group, combines legal expertise in land disputes with administrative skills, ensuring legal compliance and organizational efficiency. His dual proficiency fosters success and stability amidst complex financial and legal landscapes.

**MD of Resilience Hospitality**, excels in accounting and management, driving success with resilience and vision. Her adept financial management and leadership ensure the company's thriving success in the dynamic hospitality industry.







## Nikunj Vekariya

**Project Head** at Rashmi Group, adeptly steers projects with extensive experience and technical understanding. His proficiency ensures seamless delivery, enhancing Rashmi Group's leadership in the real estate industry.

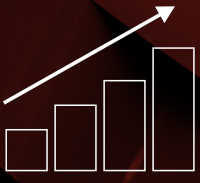


## Jagdish Sudani

**Project Head** at Rashmi Group, brings vast experience in overseeing projects with technical expertise. His proficiency ensures seamless execution, contributing to Rashmi Group's success and innovation in real estate.



# OUR JOURNEY

Achivments   
30+ Experience  
40+ Projects





# FROM BLUEPRINTS TO LANDMARKS

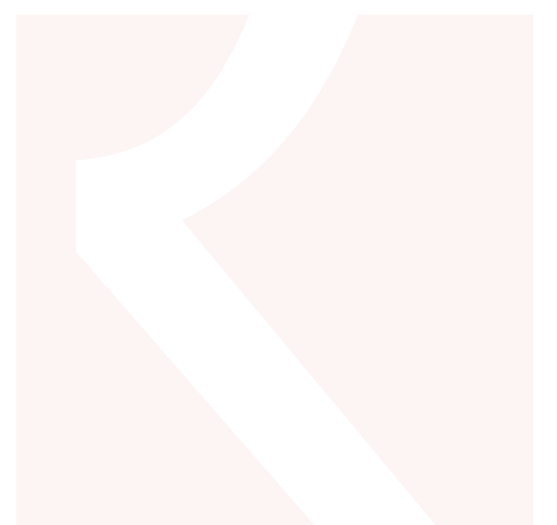
Our Projects



31+ Completed

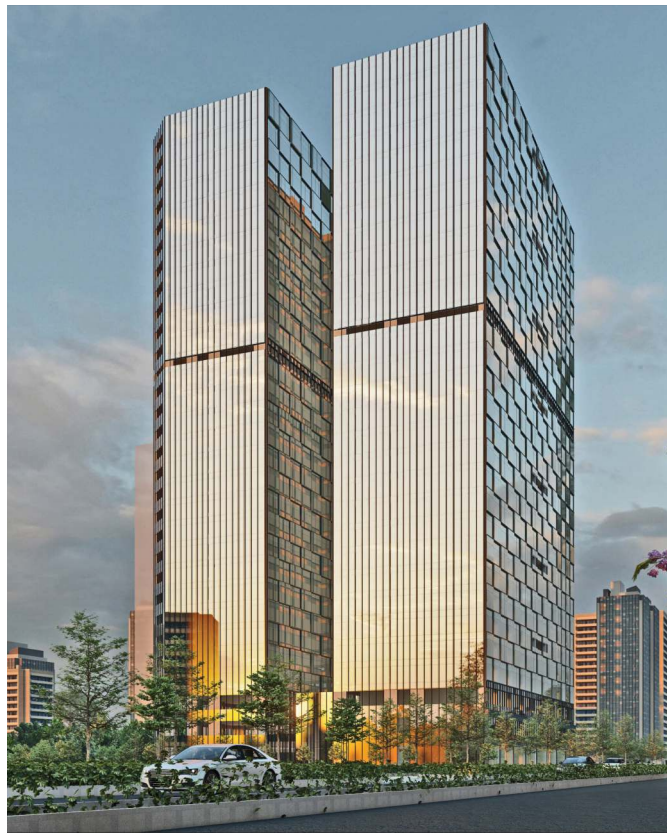
8+ On Going

4+ Coming Soon





# ON GOING PROJECTS



## Commercial Project

📍 Gift City



## The Prime

📍 Ambli T Junction



## The Connect

📍 Ambli T Junction



**Ombre**  
📍 Link in Road



**Nivaasa**  
📍 VIP Road Shela

**Sky Scape**  
📍 Shilaj







**Nirvana**  
📍 New Narol

**Rashmi Sky**  
📍 New Narol



**Rashmi South park**  
📍 New Narol





2500 +

# ACTIVE CHANNEL PARTNERS

Join over **2500+** dynamic **channel partners** collaborating with our company. experience unparalleled support, exclusive incentives, and cutting-edge resources to drive mutual success.

Together, we're reshaping industries, amplifying growth, and forging lasting relationships. join the movement and unlock boundless opportunities with our extensive network of active partners.



10,000+



# HAPPY CUSTOMERS

Discover why over 10,000 satisfied customers have chosen our properties as their dream homes. With unparalleled craftsmanship, innovative design, and exceptional service, we redefine luxury living. Join a community where happiness thrives, and every home is a testament to our commitment to excellence. Experience true satisfaction with us.





# Get in Touch



[www.rashmiengicon.in](http://www.rashmiengicon.in)



[in@rashmiengicon.com](mailto:in@rashmiengicon.com)



**Rashmi Engicon Private Limited**

722, 723 shilp epitom, rajpath rangoli road,  
opp. sun orbit, nr. infostech, ahmedabad

